

3

Nov 8 1888

014458

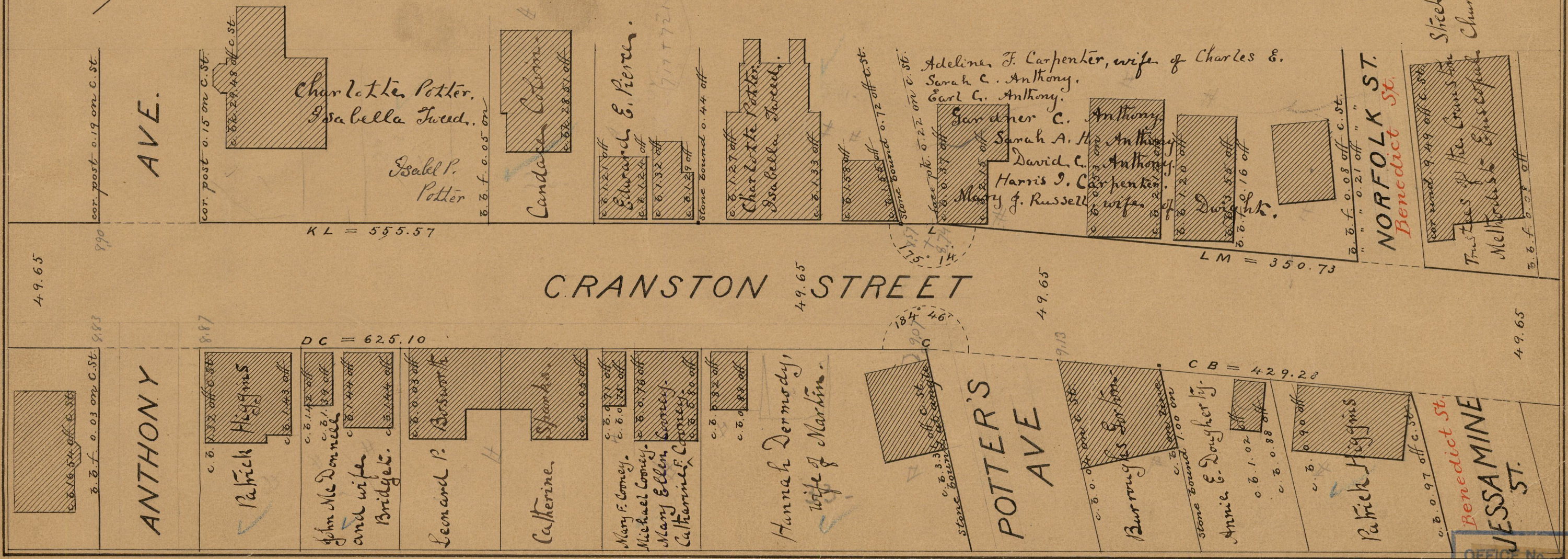
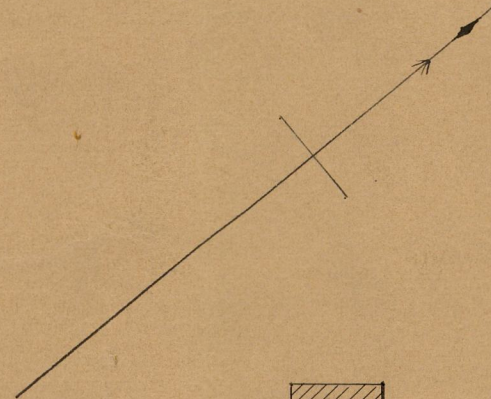
Providence R.I.  
This plat accompanies  
our report of this date

# PLAT OF CRANSTON STREET

FROM FORMER CITY LINE TO PRESENT CITY LINE

IN FOUR SHEETS

SCALE 40 FEET PER INCH



AVE.

ANTHONY

CRANSTON STREET

POTTER'S  
AVE

NORFOLK ST.  
Benedict St.

JESSAMINE  
ST.

Street  
Trustees of the Cranston  
Methodist Episcopal Church

49.65

8.83

8.87

DC = 625.10

49.65

49.65

LM = 350.73

49.65

cor. post 0.19 on C. St.

cor. post 0.15 on C. St.

0.82 29.48 off C. St.

Charlotte Potter,  
Isabella Tweed.

Isabel P.  
Potter

0.6. f. 0.05 on

Candace Cotton

Edward E. Pierce.

777 7721

Stone bound 0.44 off

Charlotte Potter,  
Isabella Tweed.

0.6. f. 0.58 off

Stone bound 0.72 off C. St.

face pt. 0.22 on C. St.

Adeline F. Carpenter, wife of Charles E.  
Sarah C. Anthony,  
Carl C. Anthony.

Gardner C. Anthony,  
Sarah A. Anthony,  
David C. Anthony,  
Harris J. Carpenter,  
Mary J. Russell

0.6. f. 1.20 off

0.6. f. 0.16 off

Dwigth.

0.6. f. 0.08 off C. St.

0.6. f. 0.21 off "

0.6. f. 0.08 off "

0.6. f. 0.08 off C. St.

Trustees of the Cranston  
Methodist Episcopal Church

0.6. f. 0.08 off

OFFICE No. 2878

83  
B-44

DRAWER 83  
SHEET B-44